

# YASKAWA

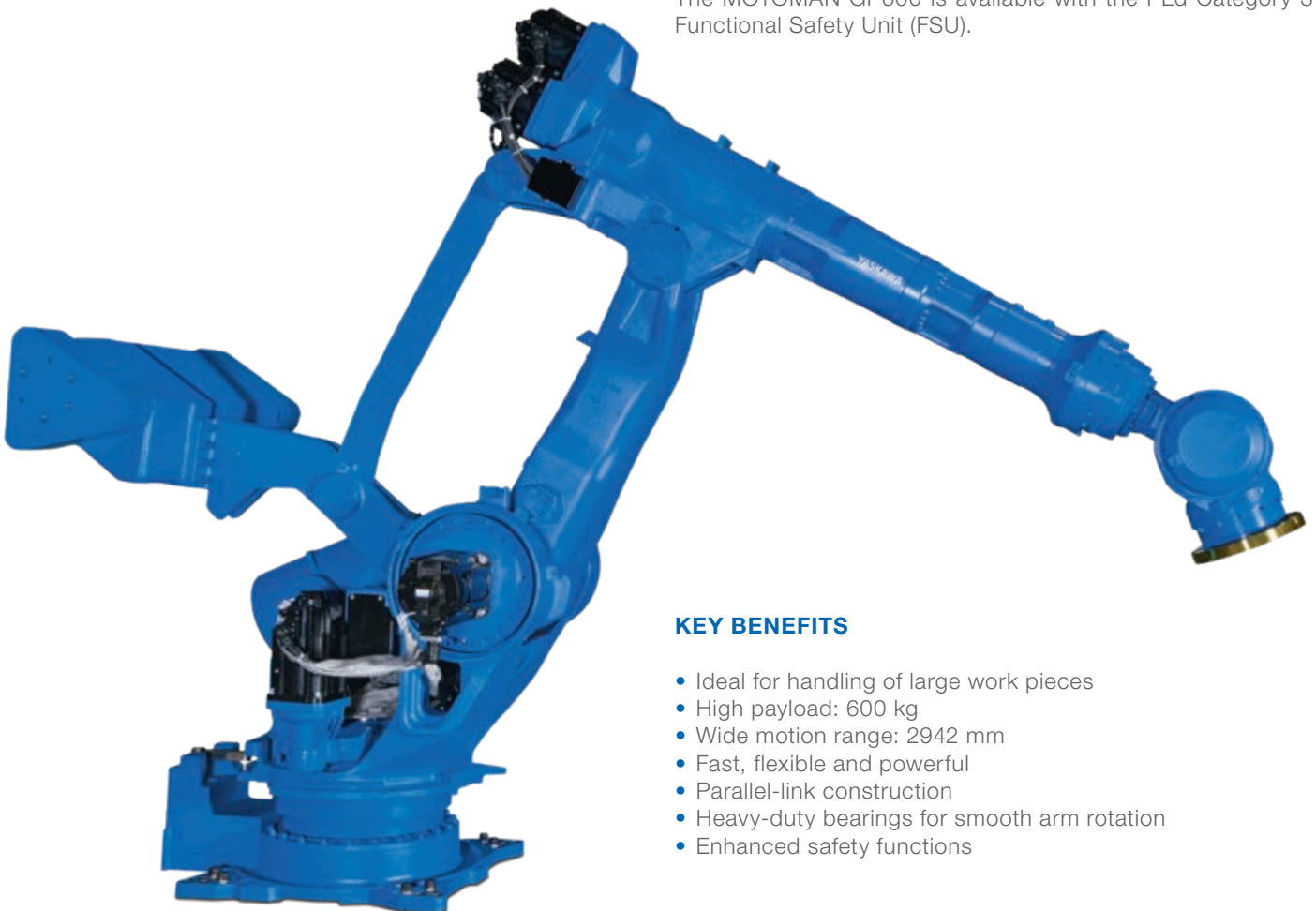
# MOTOMAN GP600

## Handling & General Applications with the GP-series

The 6-axis MOTOMAN GP600 is a versatile, powerful robot offering superior performance for a variety of applications. It provides a high payload of 600 kg and a wide motion range, which especially enables the handling of large and heavy work pieces.

The robot features a parallel-link construction for strength, rigidity and stabilization of high moment and inertia loads. The GP600 also has heavy-duty bearings which provide a smooth arm rotation.

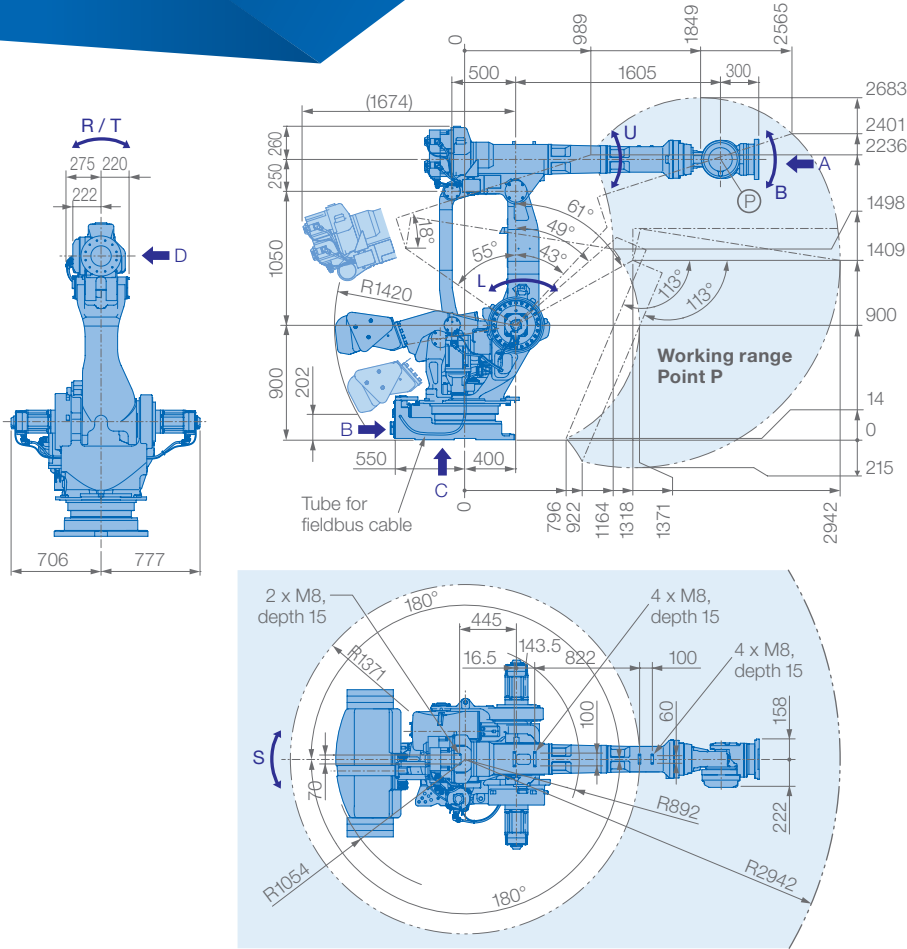
The MOTOMAN GP600 is available with the PLd Category 3 Functional Safety Unit (FSU).



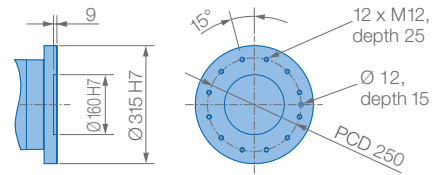
### KEY BENEFITS

- Ideal for handling of large work pieces
- High payload: 600 kg
- Wide motion range: 2942 mm
- Fast, flexible and powerful
- Parallel-link construction
- Heavy-duty bearings for smooth arm rotation
- Enhanced safety functions

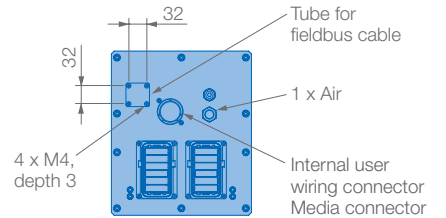
Controlled by  
YRC1000



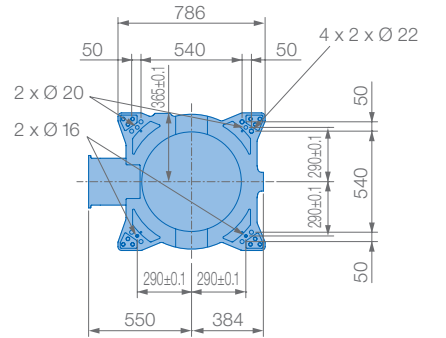
View A



View B

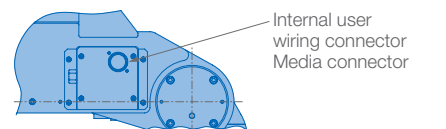


View C

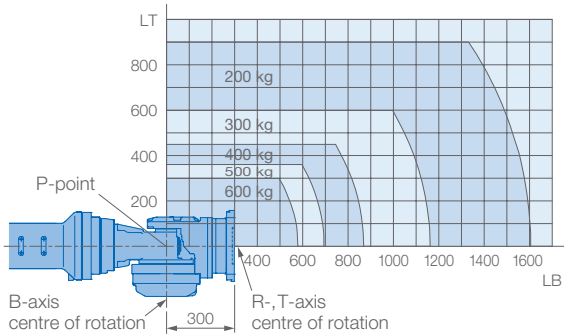


Mounting option: Floor  
Protection class: IP30/67

View D



Allowable wrist load



Specifications GP600

| Axes | Maximum motion range [°] | Maximum speed [°/sec.] | Allowable moment [Nm] | Allowable moment of inertia [kg · m <sup>2</sup> ] | Controlled axes             | 6        |
|------|--------------------------|------------------------|-----------------------|--|-----------------------------|----------|
| S    | ±180                     | 82                     | -                     | -  | Max. payload [kg]           | 600      |
| L    | +61/-55                  | 82                     | -                     | -  | Repeatability [mm]          | ±0.1     |
| U    | +18/-113                 | 82                     | -                     | -  | Max. working range R [mm]   | 2942     |
| R    | ±360                     | 80                     | 3430                  | 520  | Temperature [°C]            | 0 to +45 |
| B    | ±115                     | 80                     | 3430                  | 520  | Humidity [%]                | 20 - 80  |
| T    | ±360                     | 162                    | 1764                  | 350  | Weight [kg]                 | 3035     |
|      |                          |                        |                       |  | Power supply, average [KVA] | 7.0      |